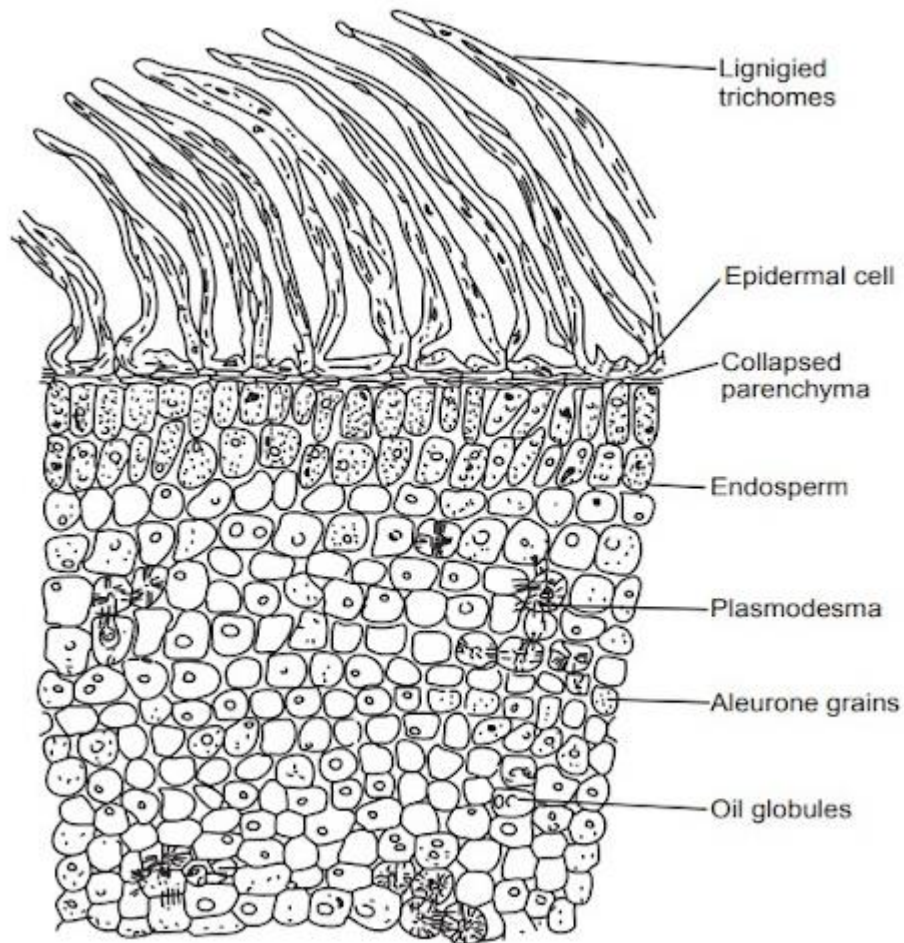


**TRANSVERSE SECTION OF NUXVOMICA****T. S. of Nuxvomica**

**Practical -25**

Date: .../.../.....

**GROSS ANATOMICAL STUDIES (TRANSVERSE SECTION) NUXVOMICA****Aim:** To identify the Transverse Section of Nuxvomica.**Reference:**.....  
.....**Requirements:**.....**Biological source:** It consists of the dried ripe seeds of *Strychnos nux vomica* Linn.**Family:** Loganiaceae

It containing not less than 1.2% strychnine.

**Gross anatomical studies:**

| S. No. | Description             | Observation |
|--------|-------------------------|-------------|
| 1.     | Lignified Trichomes     |             |
| 2.     | Endodermis cell         |             |
| 3.     | Collapsed Parenchyma    |             |
| 4.     | Endosperm               |             |
| 5.     | Plasmodesma             |             |
| 6.     | Aleurone grains         |             |
| 7.     | Oil globules            |             |
| 8.     | Cork                    |             |
| 9.     | Vessels                 |             |
| 10.    | Calcium Oxalate crystal |             |

**Report:** The given crude drug was identified as .....with various histological characters (T.S.).

## Questions Bank

1. What are the anatomical studies of Nuxvomica?
2. Write the biological source of Nuxvomica.
3. What are the uses of Nuxvomica?
4. What are the oil globules?
5. What is the role of endodermis in Nuxvomica?
6. What is the Plasmodesma?
7. What is the collapsed parenchyma?
8. What is the Aleurone grains?
9. Write one marketed product name of Nuxvomica?
10. Draw the microscopical structure of Nuxvomica.