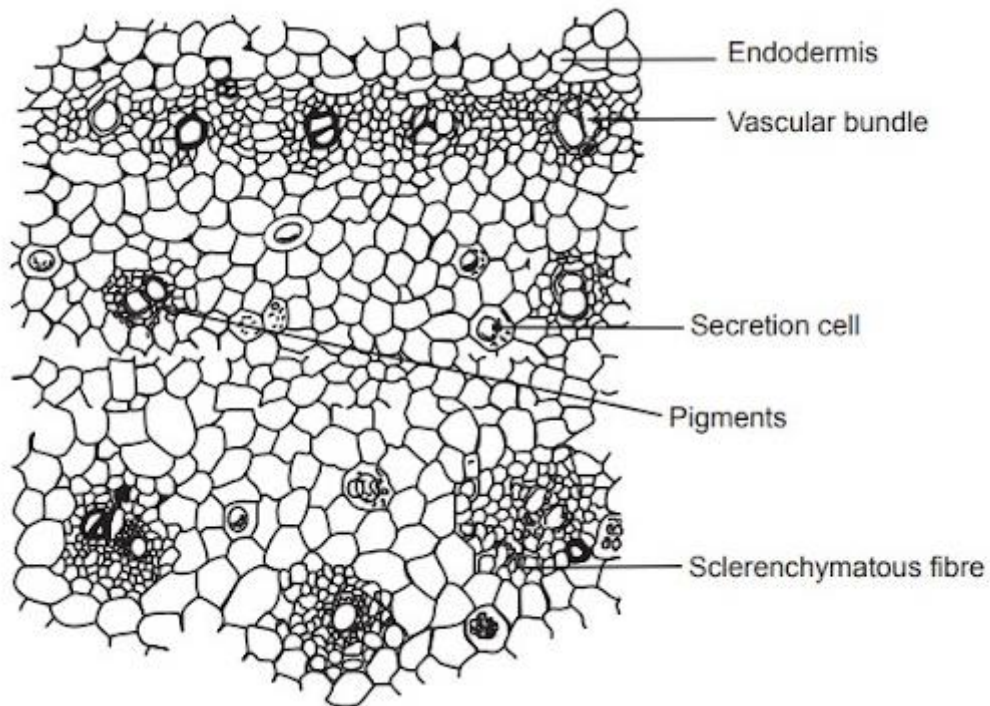


TRANSVERSE SECTION OF CURCUMA**T. S. of Curcuma**

Practical -24

Date: .../.../.....

GROSS ANATOMICAL STUDIES (TRANSVERSE SECTION) CURCUMA

Aim: To identify the Transverse Section of Curcuma.

Reference:.....
.....

Requirements:.....

Biological source: It is the dried rhizome of *Curcuma longa* Linn. (syn. *C.domestica* Valetton).

Family: Zingiberaceae

Gross anatomical studies:

S. No.	Description	Observation
1.	Cork	
2.	Endodermis	
3.	Secretion cell	
4.	Pigments	
5.	Vascular Bundle	
6.	Sclerenchymatous fibre	
7.	Oil cell	
8.	Parenchyma	
9.	Vessels	
10.	Calcium Oxalate crystal	

Report: The given crude drug was identified aswith various histological characters (T.S.).

Questions Bank

1. What are the anatomical studies of Curcuma?
2. Write the biological source of Curcuma.
3. What are the uses of Curcuma?
4. What is the Secretion cell?
5. What is the role of endodermis?
6. What is the Sclerenchymatous fibre?
7. What is the role of parenchyma?
8. Write the role of oil cell.
9. What is the Hindi name of curcuma?
10. Draw the microscopical structure of Curcuma.