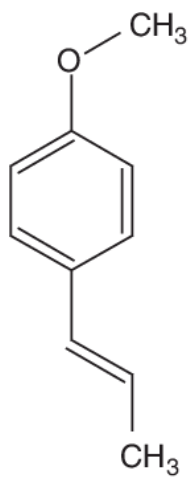
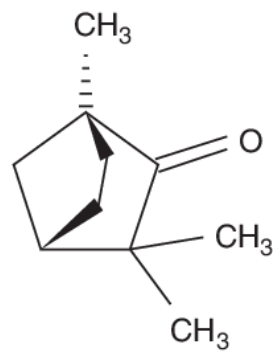


FENNEL*trans*-anethole

Fenchone

Practical -4

Date: .../.../.....

MORPHOLOGY OF FENNEL

Aim: To identify the morphological characters of given organised drug.

Reference:.....

Requirements:.....

Synonym: Bari sauf, Fructus foeniculi

Biological source: Dried ripe fruits of cultivated species of *Foeniculum vulgare* Miller.

Family: Umbelliferae

Morphological characteristics (Fennel Fruit):

S. No.	Morphological Character	Observation
1	Colour	
2	Odour	
3	Taste	
4	Shape	
5	Size	
6	Extra features	

Chemical constituents:

- It consists of proteins, fixed oil (12–18%), d-fenchone (10%), anethole (50–60%), volatile oil (4-6%), and anethole (10% of volatile oil).
- The fennel plant also contains trace amounts of limonene, anisaldehyde, and methyl chavicol.
- It contains not less than 1.4% of volatile oil.

Uses: It is used as:

- Carminative
- Respiratory stimulant
- Aromatic
- Flavoring agent

Report: The given organised drug was identified as.....

Questions Bank

1. What is the odour of Fennel?
2. Write the botanical name of Fennel.
3. What are the uses of Fennel?
4. Write the name of chemical constituent of Fennel.
5. What are the carminative drugs?
6. Write a note on physical characters of Fennel.
7. What is Respiratory stimulant?
8. Fennel contains not less than% of volatile oil.
9. Write the chemical structure of anethole.
10. Paste the one marketed preparation of Fennel.