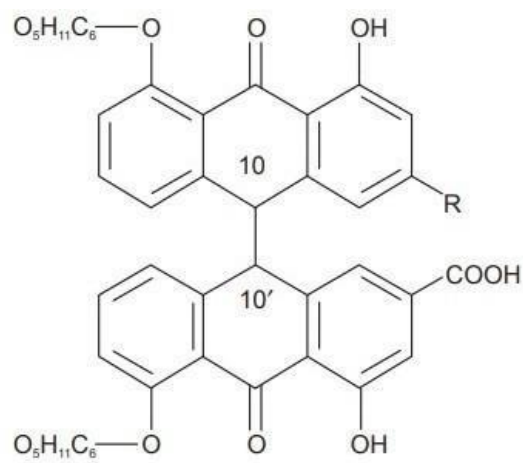
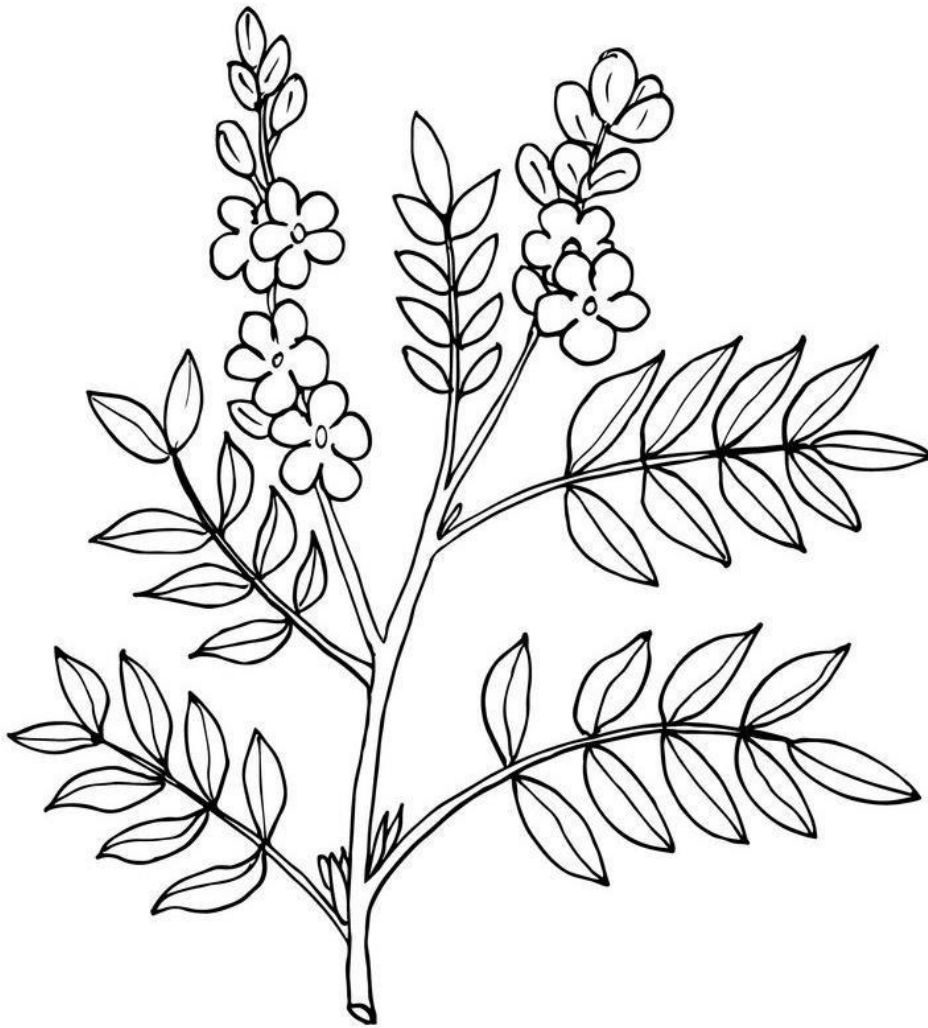


SENNA



Glycoside	10 - 10'	R
Sennoside A	trans	COOH
Sennoside B	meso	COOH
Sennoside C	trans	CH ₂ OH
Sennoside D	meso	CH ₂ OH

Practical -2

Date: .../.../.....

MORPHOLOGY OF SENNA

Aim: To identify the morphological characteristics of given organised drug.

Reference:.....
.....

Requirements:.....

Synonym: Senna ki patti, Sonamukhi, Indian Senna, Tinnevelley Senna

Biological source: It consists of dried leaflets of *Cassia angustifolia* Valh.

Family: Leguminosae

Morphological characteristics (Senna Leaf):

S. No.	Morphological Character	Observation
1	Colour	
2	Odour	
3	Taste	
4	Shape	
5	Size	
6	Extra features	

Chemical constituents:

- It Consists of anthraquinone glycosides mainly A, B, C and D.
- The proportion of glycosides computed as sennoside B in it must be at least 2%.

Uses: It is used in case of irritant purgatives.

Report: The given organised drug was identified as.....

Questions Bank

1. What is the shape of Senna leaves?
2. Write the biological source of Indian Senna.
3. What are the uses of Senna leaves?
4. Write the name of chemical constituent of Senna leaves?
5. Write the chemical structure of Sennoaside B.
6. Write a note on morphological characters of Senna leaves.
7. What are purgatives?
8. Sonamukhi, is the synonyms of
9. Write the difference between Indian Senna and Tinnevelley Senna.
10. Paste the one marketed preparation of Senna.