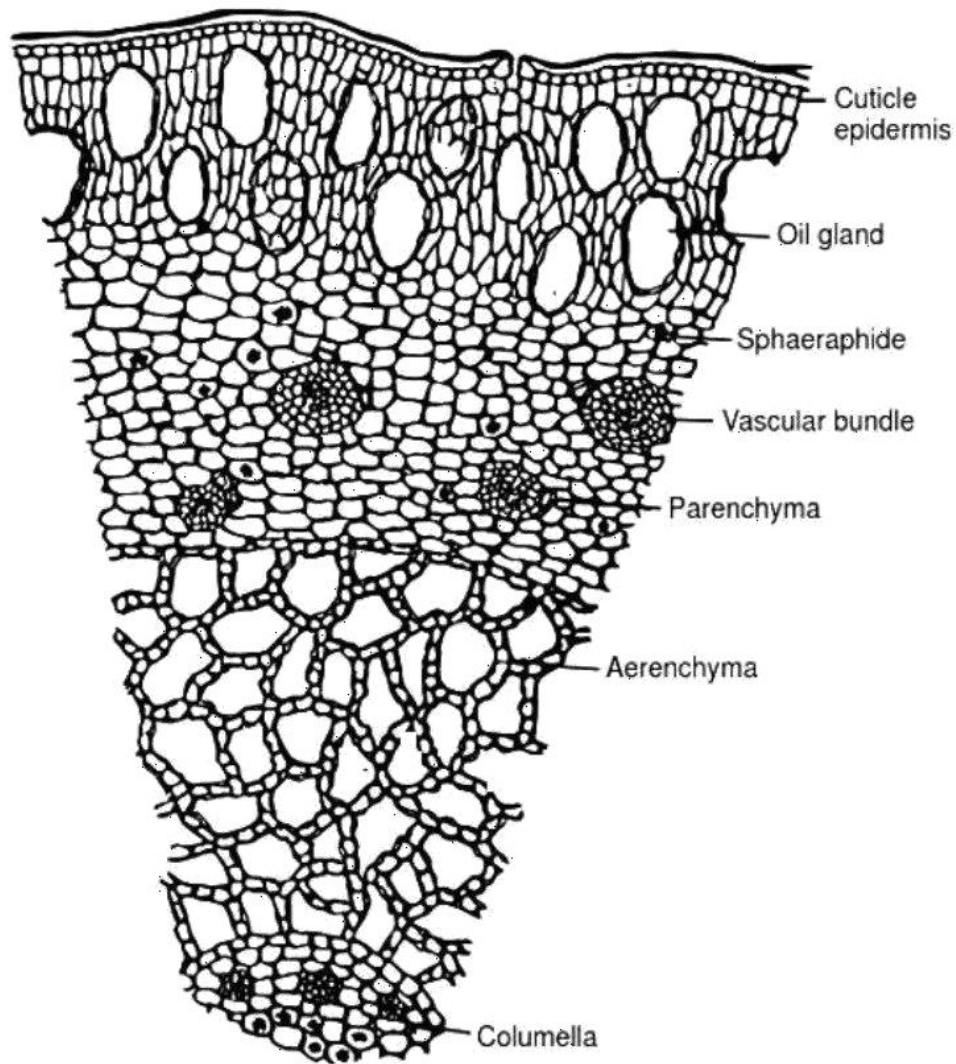


TRANSVERSE SECTION OF CLOVE**T. S. of Clove**

Practical -23

Date: .../.../.....

GROSS ANATOMICAL STUDIES (TRANSVERSE SECTION) CLOVE

Aim: To identify the Transverse Section of Clove.

Reference:.....
.....

Requirements:.....

Biological source: It consists of dried flower buds of **Eugenia caryophyllus**.

Family: Myrtaceae

Gross anatomical studies:

S. No.	Description	Observation
1.	Cuticle epidermis	
2.	Oil gland	
3.	Sphaeraphide	
4.	Vascular Bundle	
5.	Parenchyma	
6.	Aerenchyma	
7.	Columella	
8.	Cortex	
9.	Pith	
10.	Calcium Oxalate crystal	

Report: The given crude drug was identified aswith various histological characters (T.S.).

Questions Bank

1. What are the anatomical studies of Clove?
2. Write the biological source of Clove.
3. What are the uses of Clove?
4. What is the Cuticle epidermis?
5. What is the role of oil gland in clove?
6. What is the Aerenchyma?
7. What is the difference between parenchyma and aerenchyma?
8. Write the role of cambium.
9. What is the Sphaeraphide?
10. Draw the microscopical structure of Clove.