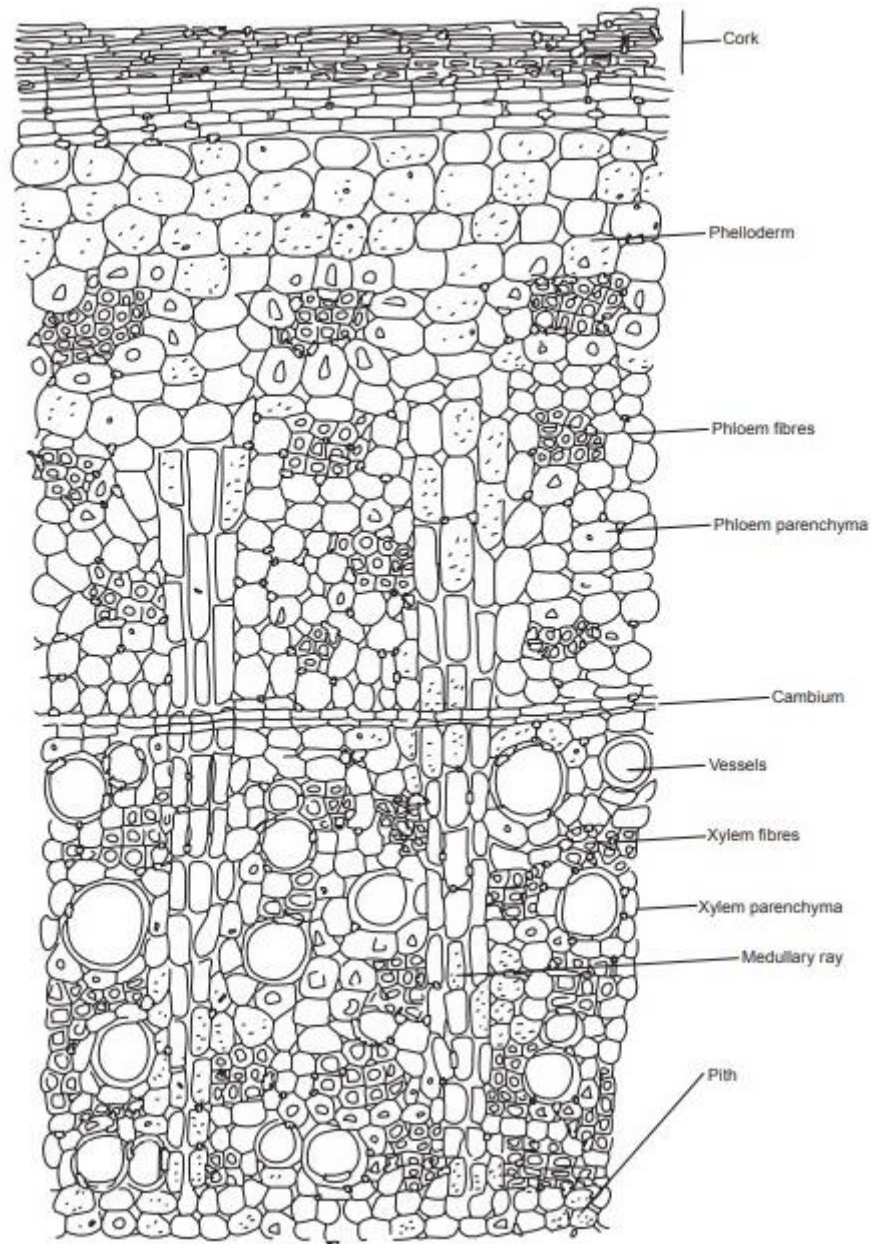


TRANSVERSE SECTION OF LIQUORICE**T. S. of Liquorice**

Practical -22

Date: .../.../.....

GROSS ANATOMICAL STUDIES (TRANSVERSE SECTION) OF LIQUORICE

Aim: To identify the Transverse Section of Liquorice.

Reference:.....
.....

Requirements:.....

Biological source: It consists of peeled and unpeeled roots, stolons, stem of **Glycyrrhiza glabra linn.**

Family: - Leguminosae

Gross anatomical studies:

S. No.	Description	Observation
1.	Cork	
2.	Phelloderm	
3.	Cambium	
4.	Phloem fibres	
5.	Phloem parenchyma	
6.	Xylem fibres	
7.	Xylem parenchyma	
8.	Medullary rays	
9.	Pith	
10.	Calcium Oxalate crystal	

Report: The given crude drug was identified aswith various histological characters (T.S.).

Questions Bank

1. What are the anatomical studies of Liquorice?
2. Write the biological source of Liquorice.
3. What are the uses of Liquorice?
4. What is the Phelloderm?
5. What is the pith?
6. What is the xylem fibres?
7. What is xylem parenchyma?
8. Write the role of cambium.
9. What are the medullary rays?
10. Draw the microscopical structure of Liquorice.