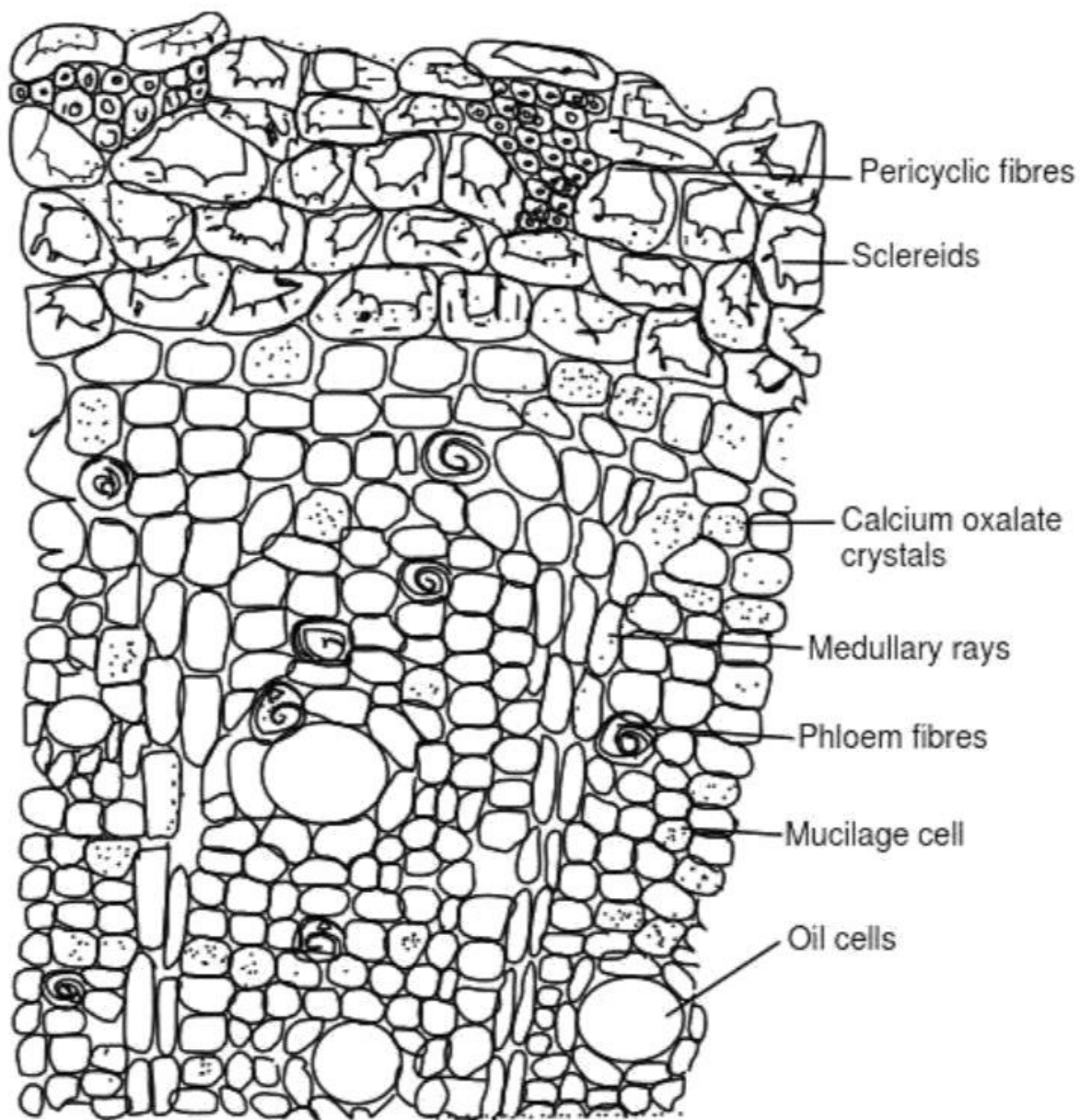


TRANSVERSE SECTION OF CINNAMON BARK

Practical -18

Date: .../.../.....

GROSS ANATOMICAL STUDIES (TRANSVERSE SECTION) OF CINNAMON

Aim: To identify the Transverse Section of Cinnamon.

Reference:.....
.....

Requirements:.....

Biological source: It is obtained from dried inner bark of **Cinnamomum zeylanicum**.

Family: Lauraceae

Gross anatomical studies:

S. No.	Description	Observation
1.	Cork	
2.	Cortex	
3.	Starch grains	
4.	Calcium oxalate	
5.	Phloem	
6.	Xylem	
7.	Fibers	
8.	Mucilage cell	
9.	Parenchyma	
10.	Oil Cell	

Report: The given crude drug was identified aswith various histological characters (T.S.).

Questions Bank

1. What are the anatomical studies of Cinnamon?
2. Write the biological source of Cinnamon.
3. What are the uses of Cinnamon?
4. What is the role of oil cell in Cinnamon?
5. What is the role of phloem fibres in Cinnamon?
6. What are the medullary rays?
7. Which datura part consist of Calcium oxalate crystal?
8. What is the role of mucilage cell in Cinnamon?
9. What is the pericyclic fibres?
10. Draw the microscopical structure of Cinnamon.