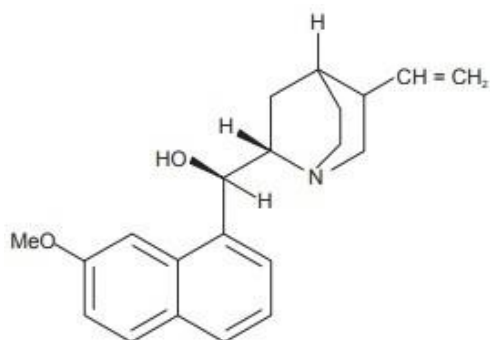
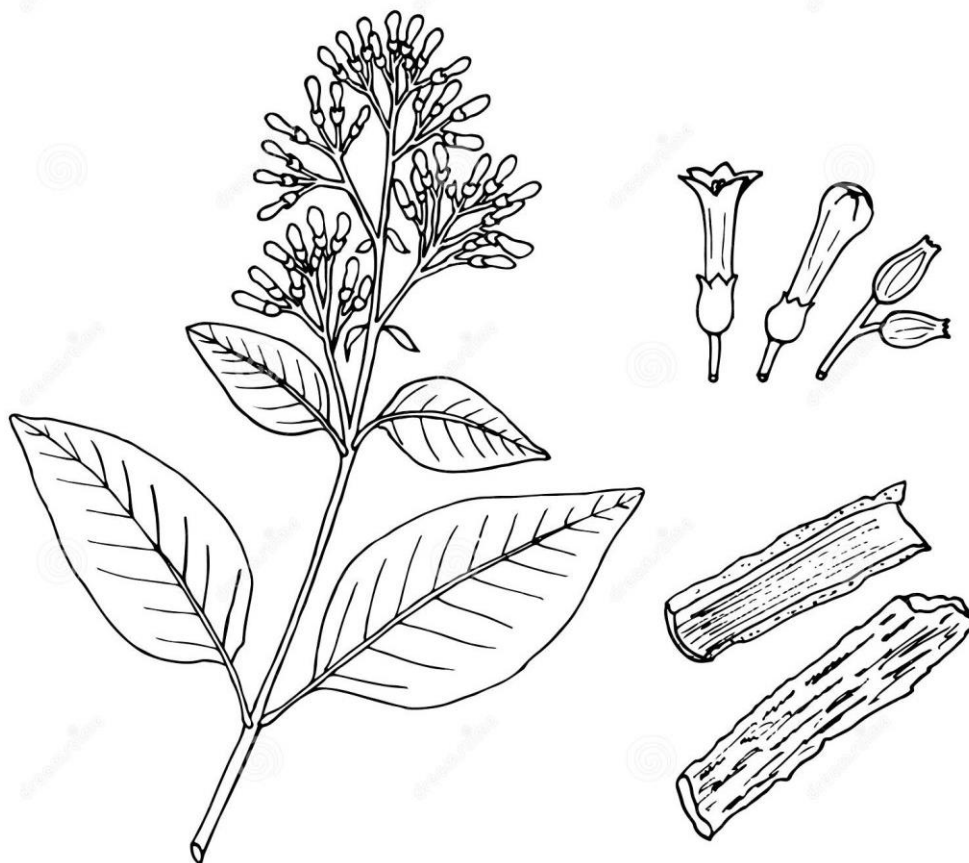
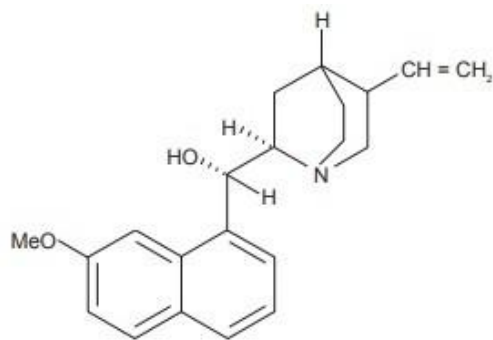


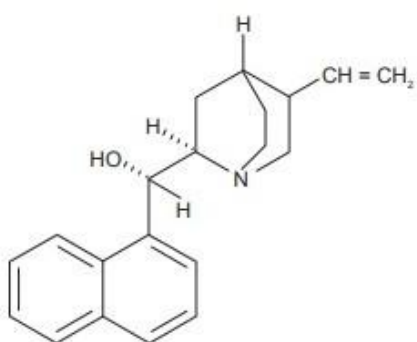
CINCHONA



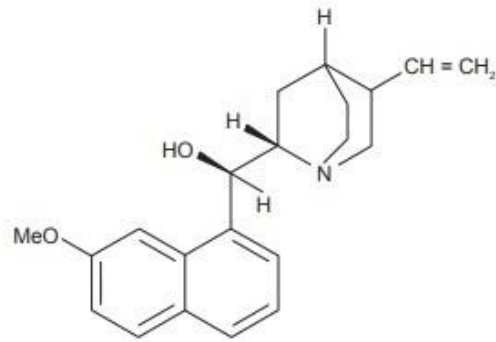
Quinine



Quinidine



Cinchonine



Cinchonidine

Practical -15

Date: .../.../.....

MORPHOLOGY OF CINCHONA BARK

Aim: To identify the morphological characters of given organised drug.

Reference:.....

Requirements:.....

Synonym: Jesuit's bark, Peruvian bark, cinchona bark

Biological source: Obtained from dried bark of cinchona species *Cinchona calisaya wedd*, *C. officinalis L.*

Family: Rubiaceae

Morphological characteristics (Cinchona Bark):

S. No.	Morphological Character	Observation
1.	Colour	
2.	Odour	
3.	Taste	
4.	Shape	
5.	Size	
6.	Extra features	

Chemical Constituents

- The main constituents include, quinine, quinidine, cinchonine and cinchonidine.
- It contains not less than 6% of total alkaloids of cinchona.

Uses: It is used as:

- Anti-malarial
- Bitter tonic
- Anti-pyretic

Report: The given organised drug was identified as.....

Questions Bank

1. What is the Anti-pyretic property?
2. Write the chemical structure of cinchonine.
3. Write the colour of cinchona bark.
4. Write the botanical name of cinchona bark.
5. What is/are the main chemical constituent of cinchona bark.
6. Which part mainly used of cinchona.
7. Write the Biological source of cinchona bark.
8. Write a note on traditional product of cinchona bark.
9. Write the taste of cinchona bark.
10. What is the structural difference between cinchonine and cinchonidine?