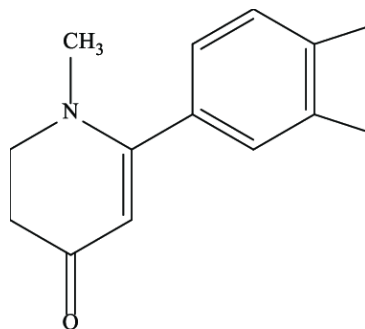
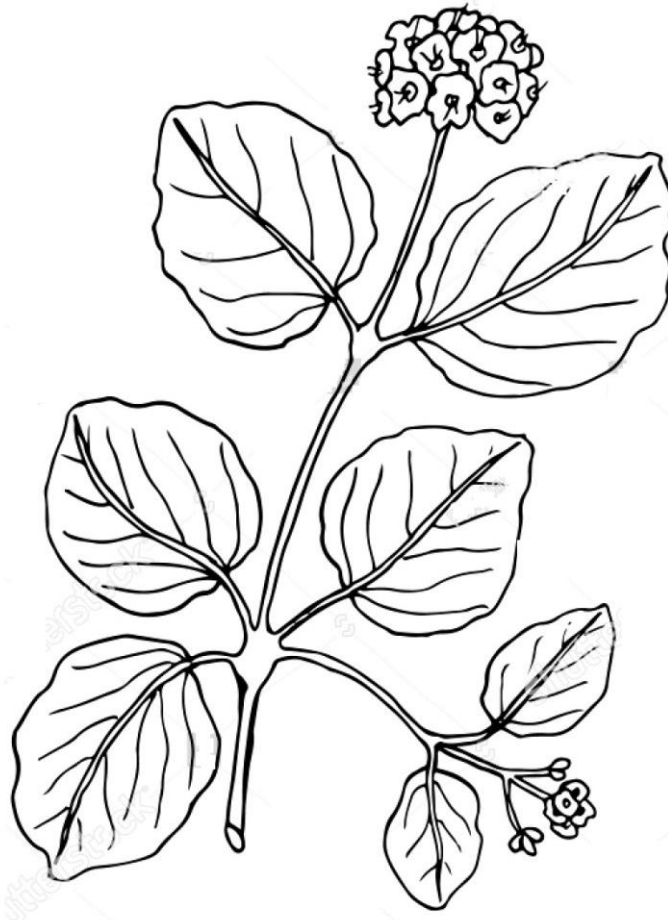


PUNARNAVA

Structure of Punarnavine

Practical -14

Date: .../.../.....

MORPHOLOGY OF PUNARNAVA

Aim: To identify the morphological characters of given organised drug.

Reference:.....

Requirements:.....

Biological Source: Punarnava it is dried herb of plant part of **Boerhaavia diffusa**.

Family: Nyctaginaceae.

Morphological Characteristics (Punarnava leaves and Fruits):

S. No.	Morphological Character	Observation
1.	Colour	
2.	Odour	
3.	Taste	
4.	Shape	
5.	Size	
6.	Extra features	

Chemical Constituents

Generally whole plant consists the following phytochemical constituents; those are Punarnavine (Alkaloids), β - sitosterol (Phytosterols), Liriodendrin (lignans), Punarnavoside (Rotenoids), Boerhavine (Xanthones) and Potassium nitrate (Salts).

Uses:

- Diuretic & anti Inflammatory
- Also used in liver tonic preparation.
- Nephritic syndrome
- Chronic edema

Report: The given organised drug was identified as.....

Questions Bank

1. What is the Diuretic property?
2. What is the Nephritic syndrome?
3. What is the Chronic edema?
4. Write the botanical name of Punarnava.
5. What is/are the main chemical constituent of Punarnava?
6. Which part mainly used of Punarnava?
7. Write the structure of Punarnavine.
8. Write a note on traditional product of Punarnava.
9. Punarnava herb is used as.....
10. May be Punarnava used in Enlargement of spleen?