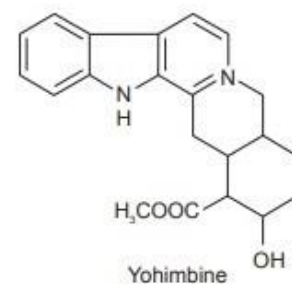
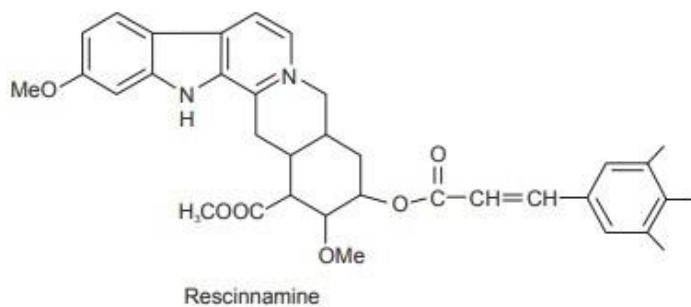
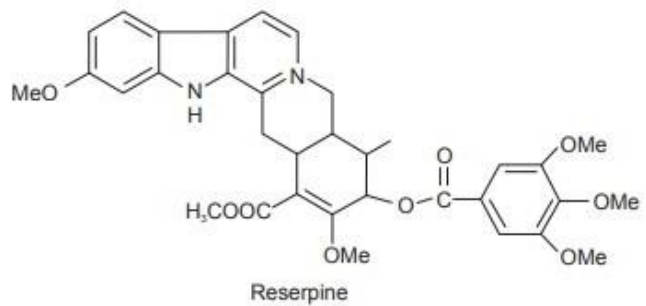
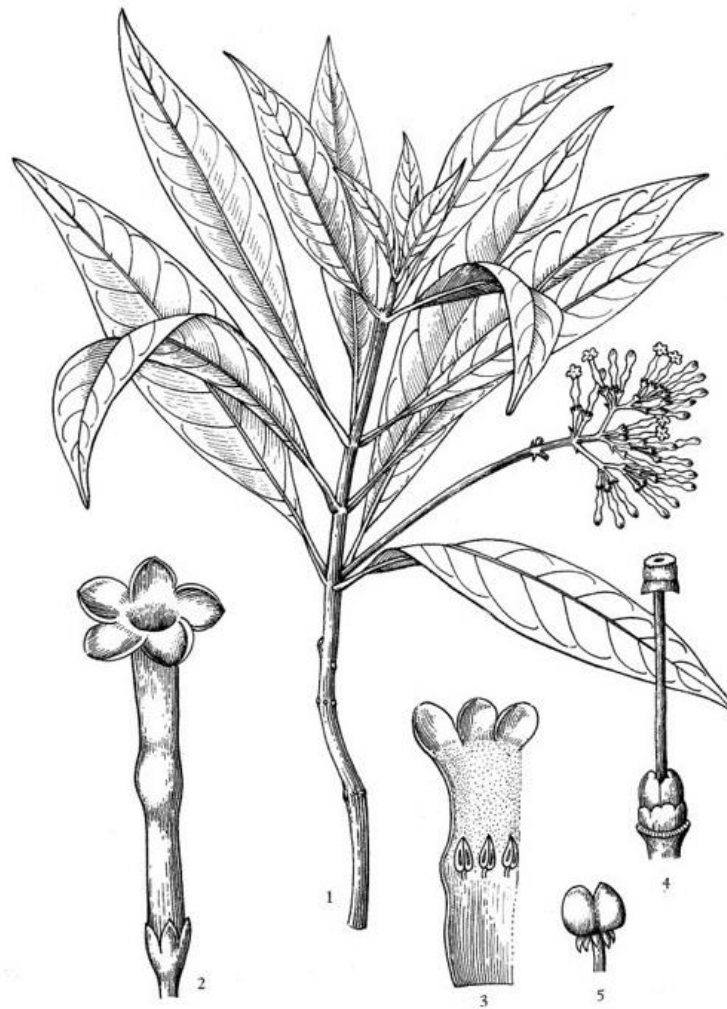


RAUWOLFIA



Practical - 12

Date: / /

MORPHOLOGY OF RAUWOLFIA

Aim: To identify the morphological characteristics of given organised drug.

Reference:.....
.....

Requirements:.....

Biological Sources: It consists of the dried rhizome and roots of **Rauwolfia serpentine**. It is also known as Indian snake root.

Family: Apocynaceae

Morphological characteristics (Rauwolfia rhizome & roots):

S. No.	Morphological Character	Observation
1.	Colour	
2.	Odour	
3.	Taste	
4.	Shape	
5.	Size	
6.	Extra features	

Note:

- It is a perennial shrub.
- The roots of rauwolfia are rarely branched.
- The rootlets are 0.5-1mm in diameter.
- Outer surface consists of wrinkles or longitudinal ridges with occasional scars of rootlets.

Chemical constituents:

- ❖ The chemical constituents of rauwolfia are alkaloids i.e., it consists of 40 types of alkaloids (about 0.7-2.4%).
- ❖ Reserpine and rescinnamine are alkaloids which have main therapeutical effect in rauwolfia.
- ❖ Also, it contains indole alkaloids and iridoid glycoside, 7- epiloganin, which is a new sucrose derivative.
- ❖ It also contains ajmaline and ajmalicine.

Uses:

- Rauwolfia is used in the treatment of systolic hypertension.
- Also used in certain neuropsychiatric disorders.
- Ajmalicine is isolated from rauwolfia which is used in the treatment of circulatory disease.
- It has the property of hypotensive and tranquillizer.
- It is also used in anxiety condition.
- It is used as sedative.
- It stimulates the central of peripheral nervous system.
- Its roots have the property of increase the uterine contraction.
- It is also used in the treatment of intestinal disorders and anthelmintic bitter tonic and febrifuge.

Report: The given unknown organised drug was identified as.....

Questions Bank

1. What is the anthelmintic bitter tonic?
2. What is the febrifuge?
3. What are the hypotensive and tranquillizer effect?
4. Which chemical constituent of Rauwolfia is used in the treatment of circulatory disease?
5. Which part of Rauwolfia have the property of increase the uterine contraction.
6. Write the difference between ajmaline and ajmalicine. Chemical.
7. How many types of alkaloids present in Rauwolfia plant?
8. Write the dose/amount of Rauwolfia as antipsychotic and antihypertensive medicine.
9. Which sucrose derivative found in Rauwolfia?
10. Rauwolfia chemical show the neuroleptic action.....