

Activity - 3

Topic: Define the drug distribution. Write the steps of drug distribution, factors, physiological barrier & binding site of HSA.

Drug Distribution:

.....
.....

Drug Elimination:

.....
.....

Steps in drug Distribution:

1.

.....
.....

2.

.....
.....

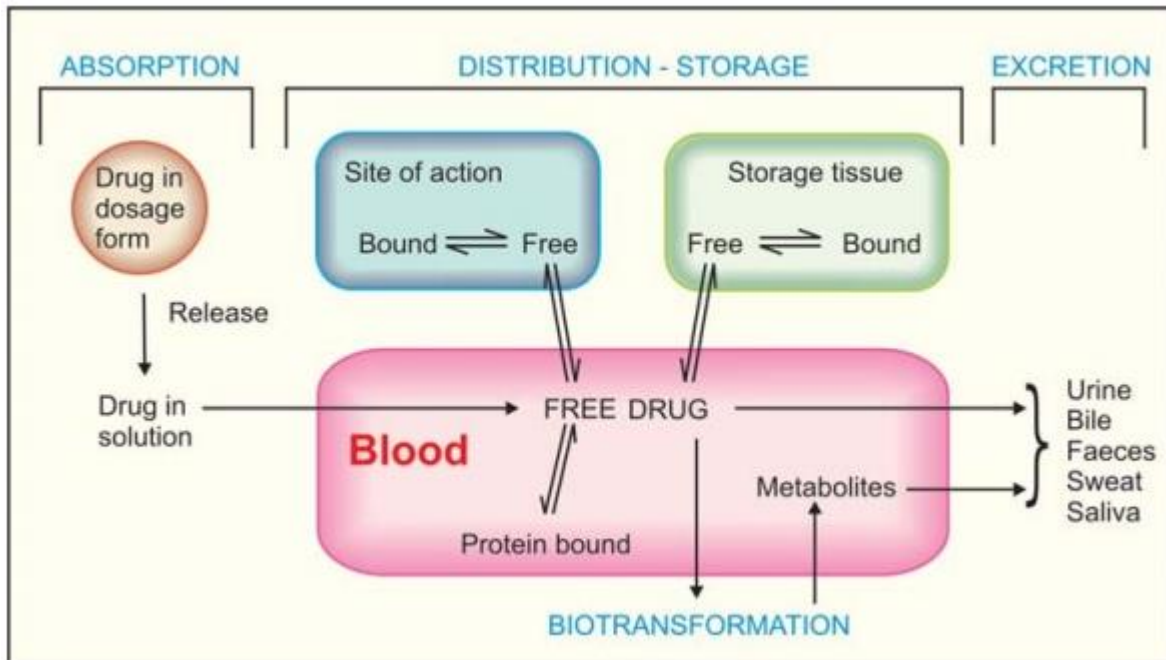
Rate Limiting Steps:

1.

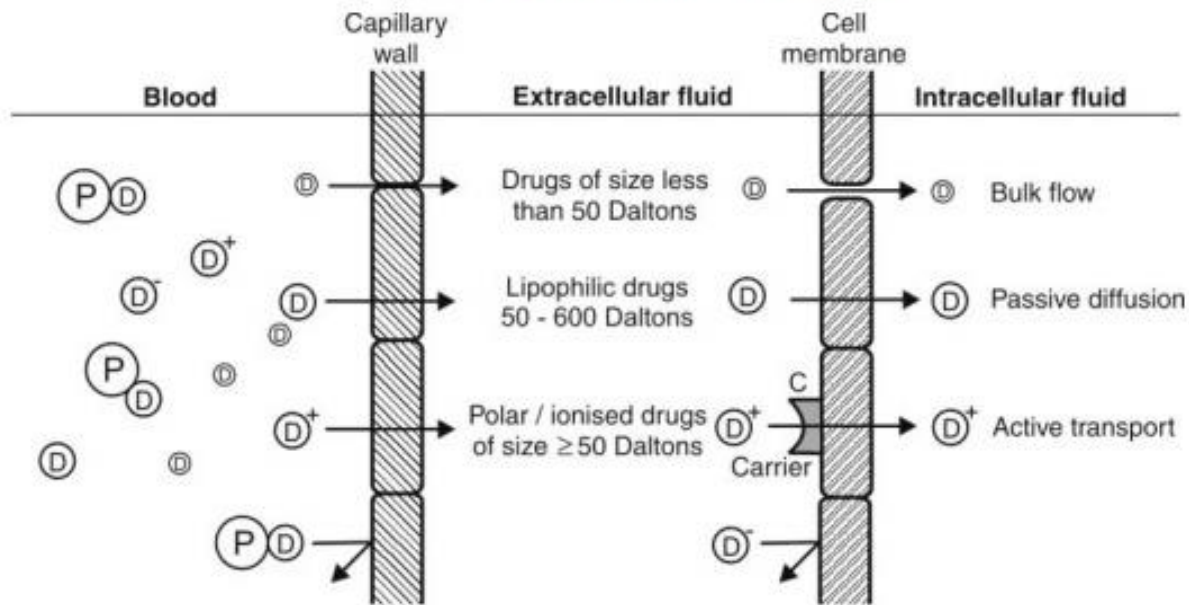
.....
.....

2.

.....
.....



Drug Distribution Process



Factor affecting distribution of drug:

- 1.....
- 2.....
- 3.....
- 4.....
- 5.....
- 6.....

Physiological barriers to Diffusion of Drugs:

Simple Capillary Endothelial Barrier
.....

Simple Cell Membrane Barrier
.....

Blood Brain Barrier
.....

Blood – CSF Barrier

.....
Blood Placental Barrier

.....
Blood Testis Barrier

.....
Human Serum Albumin binding site: HSA is the most abundant plasma protein with large drug binding capacity. Both endogenous compounds and drugs bind to HAS.

Four different sites on HSA:

Site I:

Site II:

Site III:

Site IV: